



MOHINI MADHAV

3BHK SPACIOUS HOMES
AT PRABHAT ROAD

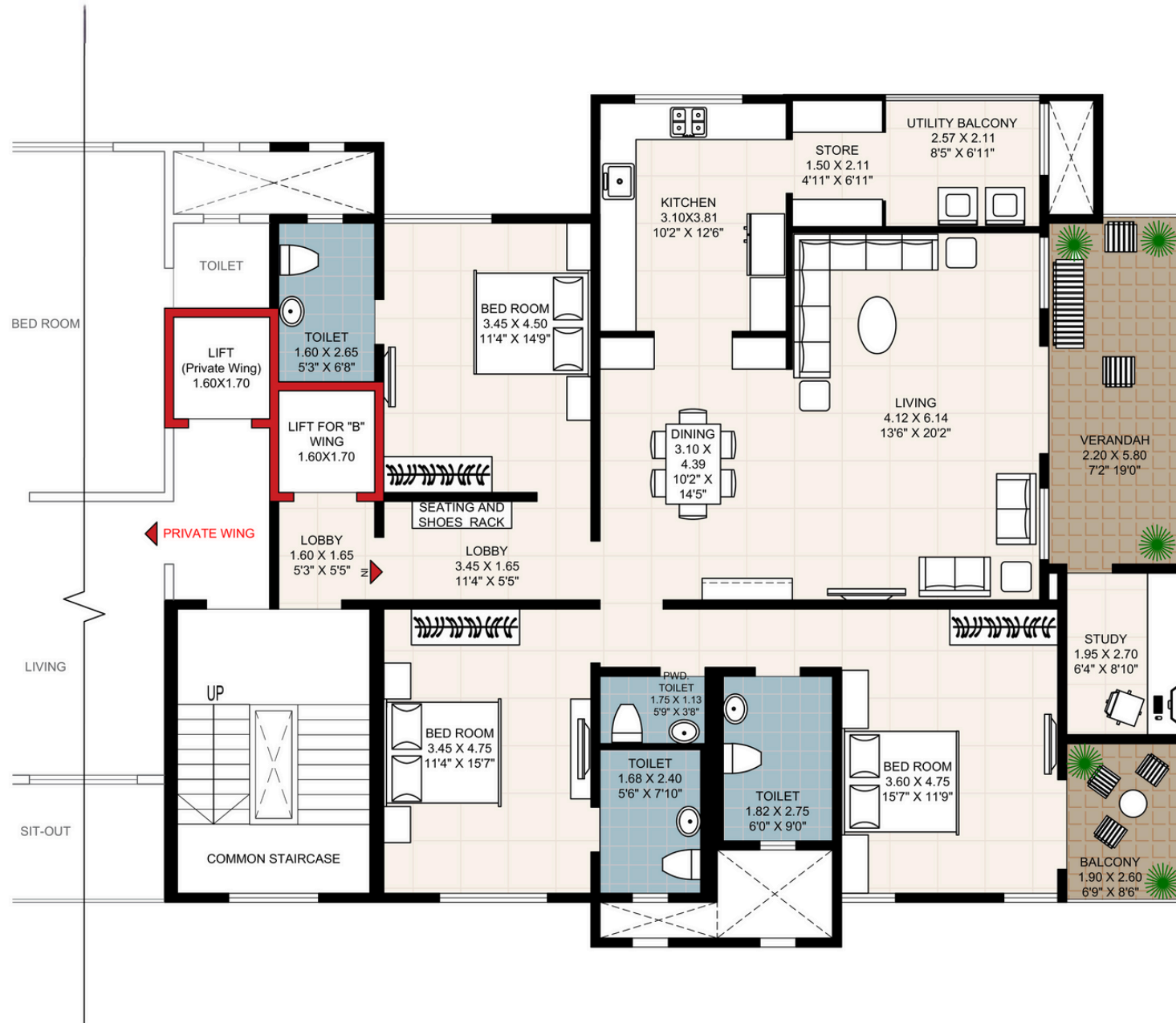
BY





*This is a visualizer's impression and is subject to change at the sole discretion of the developer.

TYPICAL FLOOR PLAN



J O G G I N G T R A C K



*All furniture, fixtures shown are the visualizer's impression and are subject to change at the sole discretion of the developer. The final delivered apartment is excluding these fit outs

AMENITIES



One auto-door elevator of reputed make.



CCTV monitoring of entrance lobby and building perimeter.



Mechanical stacked car-park provided for each apartment.



Motion sensors lights for common areas.



100% Power backup for lift and common lighting areas.



Paved driveway.

SPECIFICATIONS



STRUCTURE

- RCC Frame work with seismic design



WALLS

- AAC block work for all internal and external walls.
- POP/Gypsum finishes for internal walls and ceiling.



WINDOWS

- Premium aluminium windows
- Premium aluminium sliding doors for sit-outs.



KITCHEN/UTILITY

- Granite kitchen platform.
- SS Sink.
- Utility balcony area with provision of electrical connections and plumbing for washing machine/dish washer.



DOORS

- Wooden finish door frames and flush door shutters.
- Wood framed main door with veneer panelling.
- Bathroom doors with both sides laminated flush doors.



FLOORING

- 1200 x 600mm Vitrified flooring tiles of reputed make for the entire apartment.
- Anti-skid ceramic flooring tiles of reputed make for all sit-outs and balconies.



PAINTING

- Plastic Emulsion Paint for all internal walls.
- Acrylic Paint for external walls.



TOILETS

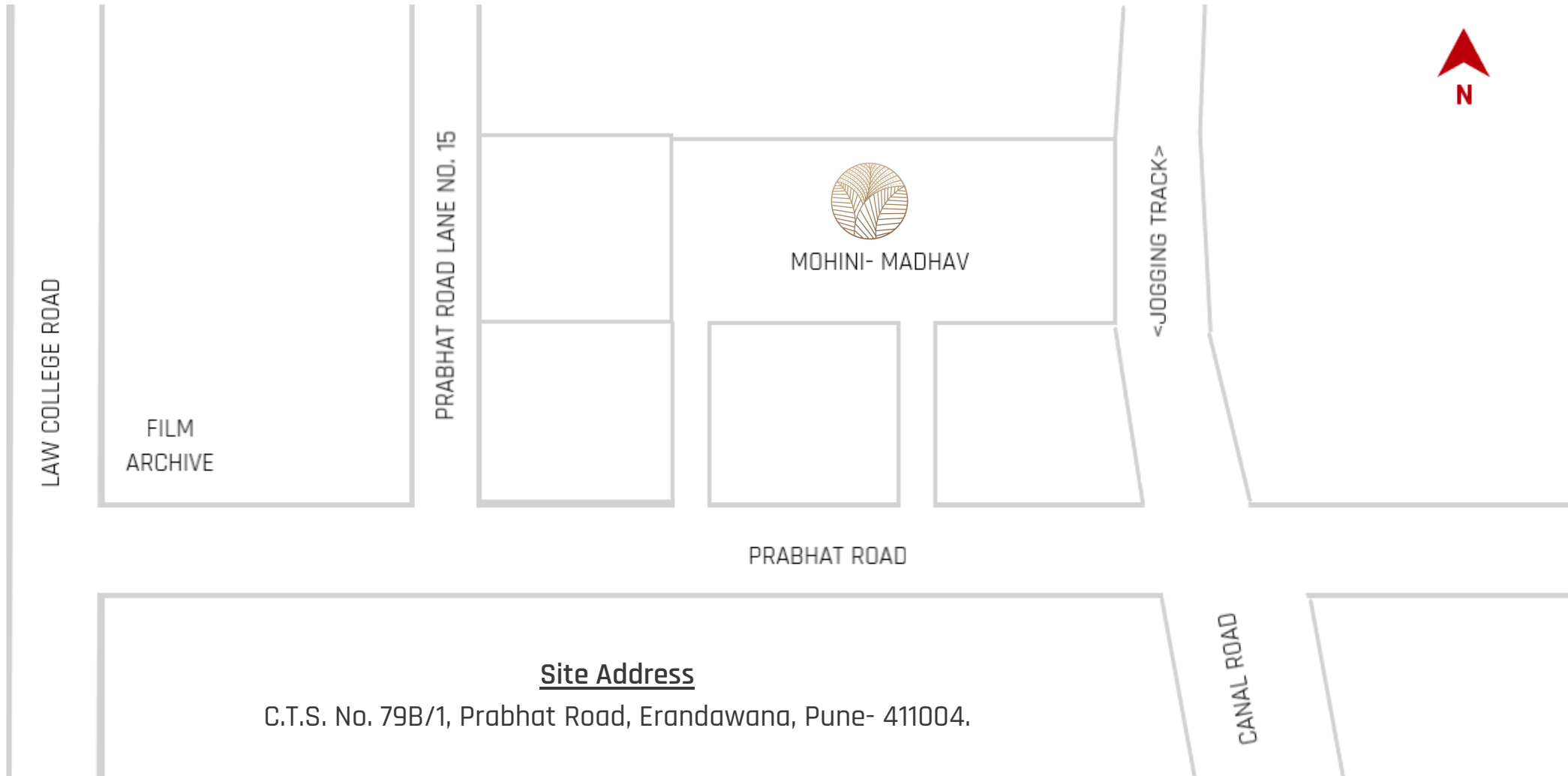
- Anti-skid ceramic floor tiles of reputed make.
- Wall tiles of reputed make.
- CPVC and UPVC for all pipe plumbing.
- Jaquar/Equivalent bathroom fitting in all toilets.
- Hindware/Jaquar/Equivalent sanitaryware in all toilets.



ELECTRICAL

- Copper wiring of reputed make.
- Sufficient number of light points along with plug points.
- GM/Legrand/Equivalent modular switches and sockets in all rooms.

LOCATION MAP



Site Address

C.T.S. No. 79B/1, Prabhath Road, Erandawana, Pune- 411004.



Corporate. Office: 767/5. "Kotwal Complex", Bhandarkar Road, Deccan Gymkhana, Pune 411 004

CONTACT: +91 98235 03006