



SHREE

3BHK HOMES
AT SHUKRAWAR PETH

BY



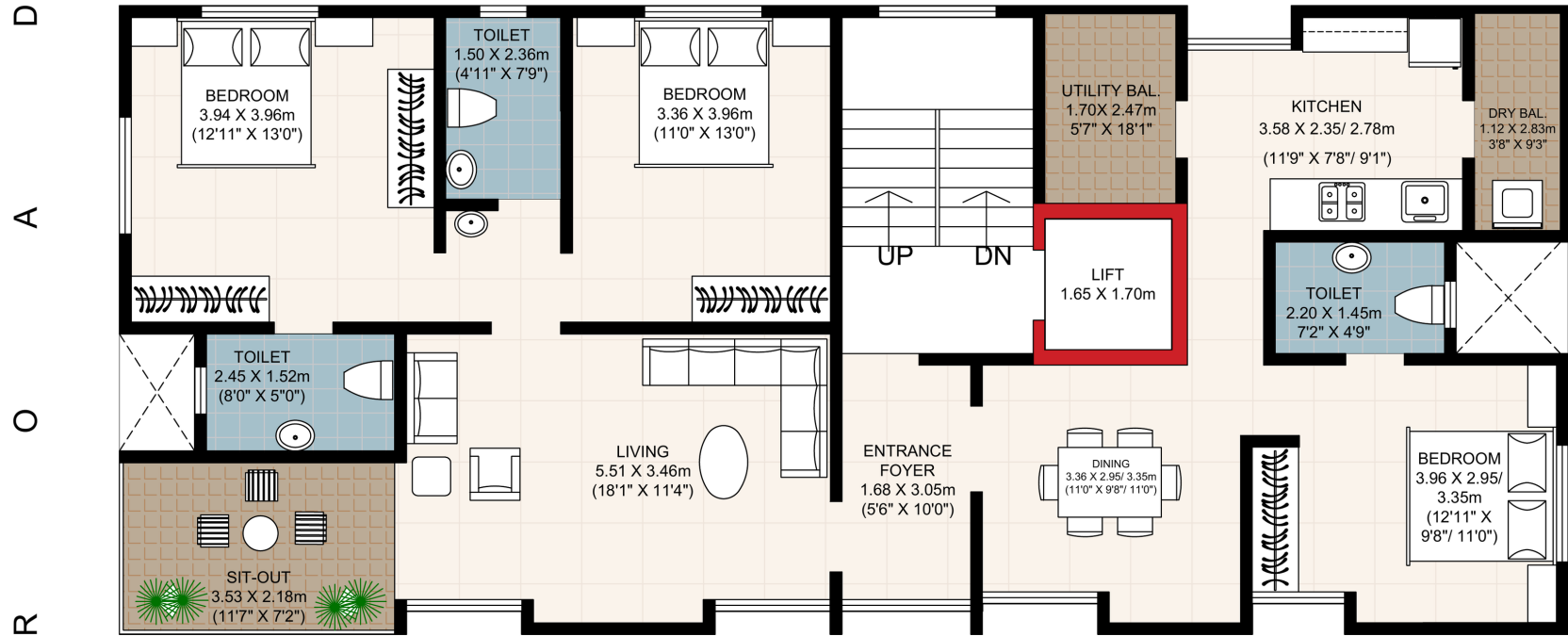


SHREE

3 BHK Homes

Shree Apartments is a luxurious project situated at the heart of the city in the peaceful Sathe Colony in Shukrawar Peth. It is located off Bajirao Road, adjoining the telephone exchange. A spacious project consisting of one 3 BHK apartment per floor with a separate Dining and Sit-Out, Shree Apartments is open from all four sides ensuring complete privacy. Parking space provided for each flat. The project is located close to Laxmi Road, Mahatma Phule Mandai and all the major markets of the city. It is well connected with public transport services such as PMPML Bus, Swargate Bus Depot and the proposed Metro line. Reputed schools and colleges are located in the vicinity.

TYPICAL FLOOR PLAN



TYPICAL FLOOR PLAN

SITE ADDRESS:	
CORPORATE OFFICE: 767/5 KOTWAL COMPLEX, BHANDARKAR ROAD, DECCAN GYMKHANA, PUNE- 411004.	
 PARANJPE PROPERTIES	

*All furniture, fixtures shown are the visualizer's impression and are subject to change at the sole discretion of the developer. The final delivered apartment is excluding these fit outs

AMENITIES



One auto-door elevator of reputed make.



CCTV monitoring of entrance lobby and building perimeter.



One Mechanical stacked car-park provided for each apartment.



Motion sensors lights for common areas.



100% Power backup for lift and common lighting areas.



Paved driveway.

SPECIFICATIONS



STRUCTURE

- RCC Frame work with seismic design



WALLS

- AAC block work for all internal and external walls.
- POP/Gypsum finishes for internal walls and ceiling.



WINDOWS

- Premium aluminium/UPVC windows
- Premium aluminium sliding doors for sit-outs.



KITCHEN/UTILITY

- Granite kitchen platform.
- SS Sink.
- Dry balcony area with provision of electrical connections and plumbing for washing machine/dish washer.



DOORS

- Wooden finish door frames and flush door shutters.
- Wood framed main door with veneer panelling.
- Bathroom doors with both sides laminated flush doors.



FLOORING

- Vitrified flooring tiles of reputed make for the entire apartment.
- Anti-skid ceramic flooring tiles of reputed make for all sit-outs and balconies.



PAINTING

- Acrylic Emulsion Paint for all internal walls.
- Acrylic Paint for external walls.



TOILETS

- Anti-skid ceramic floor tiles of reputed make.
- Wall tiles of reputed make.
- CPVC and UPVC for all pipe plumbing.
- Jaquar/Equivalent bathroom fitting in all toilets.
- Hindware/Jaquar/Equivalent sanitaryware in all toilets.



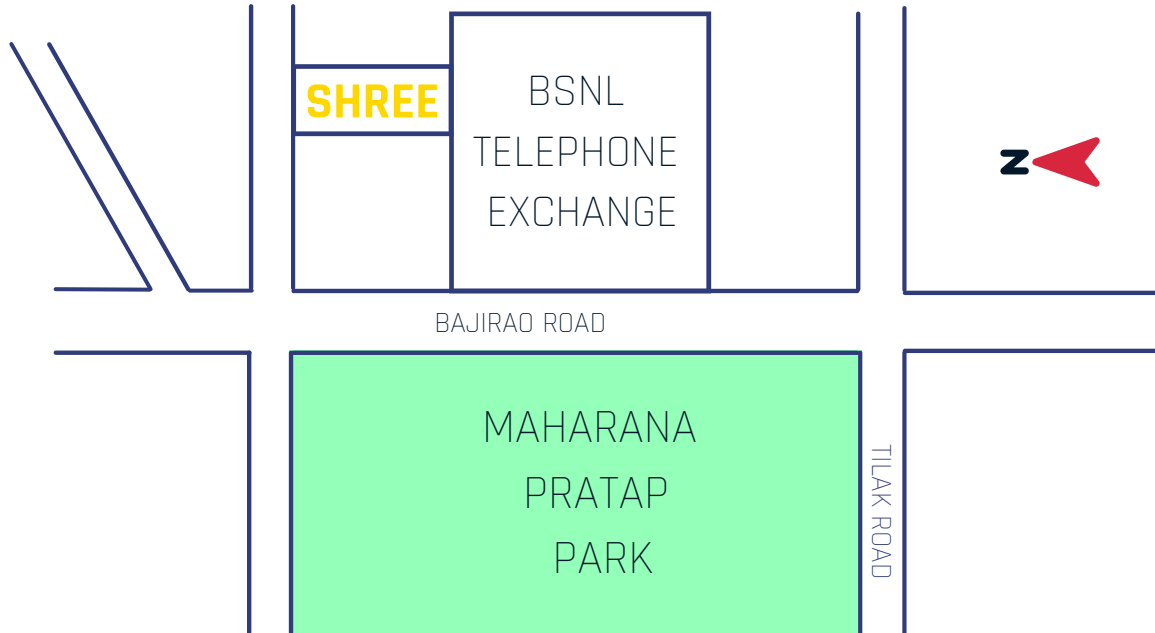
ELECTRICAL

- Copper wiring of reputed make.
- Sufficient number of light points along with plug points.
- GM/Legrand/Equivalent modular switches and sockets in all rooms.

LOCATION MAP

Site Address:

C.T.S. No. 1311, Shukrawar Peth, Pune- 411004.



Corp. Off.: 767/5, "Kotwal Complex",
Bhandarkar Road, Deccan Gymkhana, Pune 411 004

CONTACT: +91 98235 03006

E-Mail: ajayparanjpe@yahoo.com